



**PHILINTER  
ACADEMY**

# INTEGRATED

## ***BROCHURE 2025***

Learn English the right way!

# TABLE OF CONTENTS

■ CEO'S Message	02
■ Philinter History Timeline	03
■ Philinter's Location	04
■ Why Philinter is the Right Choice	05
■ Facilities	06
■ Faces Behind the Excellence	07
■ Accommodation	08
■ ESL and Speaking Courses	10
■ Junior and Primary Courses	15
■ IELTS Courses	19
■ Business and TOEIC Courses	22
■ Special Courses	27
■ What's New?	30
■ Course Summary	31
■ CEFR	32
■ Daily Schedule	33
■ Philinter Activities	34
■ Where to Shop?	37
■ Where to Dine?	38
■ Where to Relax?	39
■ Where to Stay Fit?	40

# CEO's MESSAGE



## WELCOME TO Philinter Academy!

At Philinter Academy, we believe in "Learning English the Right Way." To us, mastering English is more than just learning grammar and vocabulary—it's about unlocking opportunities and broadening your horizons. We are committed to providing a curriculum that is not only engaging but also highly effective, guided by our team of dedicated and skilled educators who are committed to delivering a superior learning experience.

Our commitment to doing things the right way is evident in our program enhancements. Our IELTS 8-week guarantee course boasts a perfect success rate. Our integrated Business Course with TOEIC and our specialized evening programs further illustrate our dedication to offering top-quality education.

We also provide unique courses like TOEFL and Cambridge programs, which are hard to find elsewhere. These offerings are part of our promise to deliver a comprehensive and exceptional learning experience, ensuring that students truly learn English the right way.

As CEO, I want to assure you that we are always striving to maintain the highest standards. We continually update our programs, facilities, and services to exceed your expectations and support your English learning journey.

Thank you.

A handwritten signature in black ink, appearing to read 'Choi In'.

**Choi In**  
Chief Executive Officer

# PHILINTER HISTORY TIMELINE

**2005**

**CALA** (Cebu Association of Language Academy)

- Implemented the **BUDDY TEACHER SYSTEM**

**2012**

Became an authorized **IELTS Registration center** of IDP Australia

**2015**

**Best English Education Center**

- Most outstanding English Education Learning Center
- Implemented FOCUS INDUSTRY, a customized business course, the first time at a Philippine language

**2017**

**Top Choice English Education Learning Center**

- World Class Philippine Company in the field of English Language

**2023**

**Reopened in March post-pandemic**

- Launched 8-week IELTS Score Guarantee

**2003**

Establishment of **Philinter Academy**

**2011**

Received its full accreditation by the **DOT** (Department of Tourism)

**2013**

Accepted as an official member of **ALTO** (Association of Language Travel Organization)

- Reaccreditation of **TESDA** for skill development

**2016**

**Top Choice English Education Learning Center**

- Best English Education Center in the Philippines
- Premier English Education Provider
- Most Outstanding and Trusted English Tutorial Center

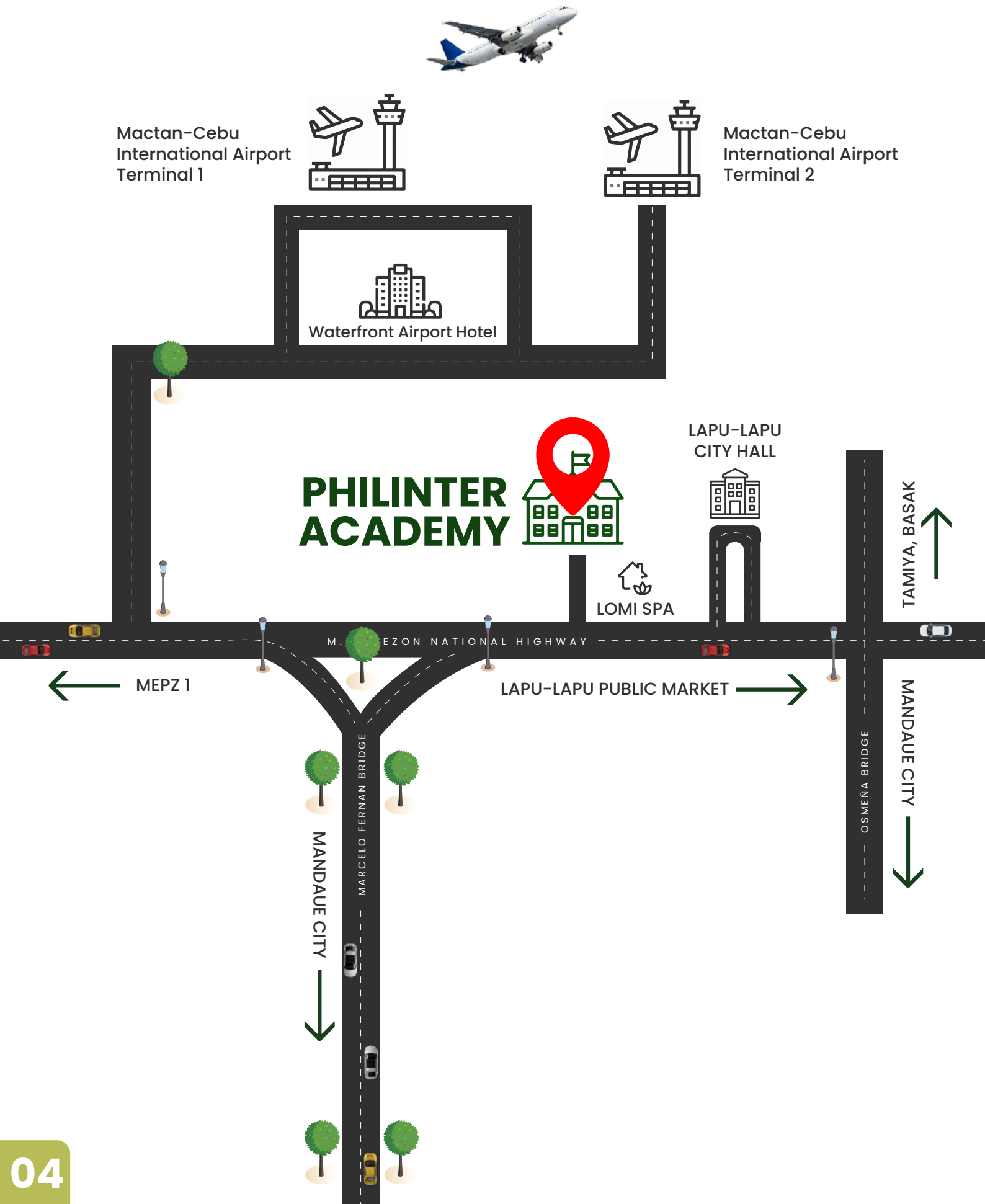
**2018**

**Premier English Education Provider**

**2024**

**Recognized as an IELTS Official Test Center by the British Council**

# PHILINTER'S LOCATION



# WHY PHILINTER IS THE RIGHT CHOICE?

## ➤ GUARANTEED PROGRESS

Committed to fostering continuous improvement, our programs are designed to ensure each student achieves their academic goals and experiences consistent growth throughout their learning journey.



## ➤ BUDDY TEACHER SYSTEM

Each student is paired with a dedicated learning partner who provides personalized guidance and support, fostering a nurturing environment that enhances engagement and boosts



## ➤ TOP 8.0 TEACHERS

Learn from a team of highly skilled and experienced instructors, each with an impressive track record, ensuring that students receive the highest quality of education and expert insights for optimal success.





# FACILITIES



**1 ON 1 CLASS CUBICLE**



**SMALL GROUP CLASSROOM**



**BIG GROUP CLASSROOM**



**STUDENT STUDY HALL**



**BRITISH COUNCIL IELTS TEST CENTER**



**LOBBY AREA**



**AMPHITHEATER**



**DINING HALL**



**CAFE**

## OTHER SERVICES



**LAUNDRY SERVICES**



**AIRPORT PICK-UP**



**HOUSEKEEPING**

# FACES BEHIND THE EXCELLENCE

## ACADEMIC SERVICES



**INTERNATIONAL STAFF**



**ACADEMIC COORDINATORS**



**QUALIFIED TEACHERS**



**BUDDY TEACHERS**

## FACILITY SERVICES



**HOUSEKEEPING**



**KITCHEN STAFF**



**SECURITY PERSONNEL**



# ACCOMMODATION

## DORMITORY



**DORM FACADE**



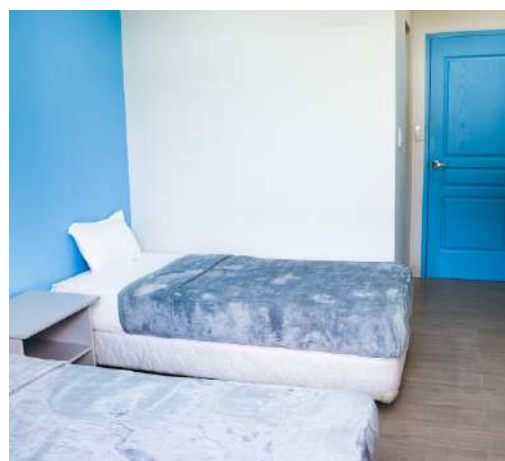
**DORM LOBBY**



**DORM HALLWAY**



**SINGLE ROOM**



**DOUBLE ROOM**



**TRIPLE ROOM**



**SWIMMING POOL**



**AZON FACADE**



**SINGLE ROOM**



**DOUBLE ROOM**

## FACILITY



**SWIMMING POOL**



**ROOF DECK**



**GYM**

# ESL AND SPEAKING COURSES

• GENERAL ESL • INTENSIVE ESL • INTENSIVE POWER SPEAKING (IPS) • LIGHT ESL



# GENERAL ESL

## Overview:

This comprehensive program offers a well-structured curriculum with 9 hours of daily classes, complemented by weekend trips and activities.

## Features:

### ■ Customized, Conversation-Centered Curriculum

Short-term courses (less than 4 weeks) focus on speaking, pronunciation, and vocabulary, while long-term courses (6 weeks or more) also include additional emphasis on writing and grammar.

### ■ Flexible Study Environment

The Semi-Spartan System offers a more relaxed study-abroad experience in Cebu, allowing students to explore and socialize after school hours, blending academic rigor with personal enjoyment.

### ■ Zero-to-One Beginner Track

The General ESL course features a Zero-to-One track for absolute beginners, offering a four-week intensive focus on speaking and vocabulary. This track helps students reach an upper-elementary



## Curriculum:

CLASS TYPE	NUMBER OF CLASSES	SUBJECTS / CONTENTS
<b>1 ON 1</b>	<b>3</b>	Speaking, Listening, Reading and Vocabulary, Word Smart, Grammar, Writing, Pronunciation Clinic
<b>SGC</b>	<b>1</b>	Start Talking, Let's Talk, Listening Power, Advance Listening and Dictation, Daily News, Basic Accent Training, Accent and Intonation, Grammar 101, Grammar 301, Grammar 501, Dialogue Patterns, Expression for Conversation, Speak Like a Pro, TED Talk, Debate Excellence, Compelling Conversations, Job Interview, Phrasal Verb, Mastering Idioms
<b>SGC CONNECTING</b> (45-minute connecting)	<b>2</b>	
<b>BGC</b> (Optional)	<b>2</b>	Advanced listening and Dictation, Basic Listening and Dictation, Supplemental Grammar, Supplemental Vocabulary, Advanced Vocabulary, News and Trends, Premium English
<b>EVENING ACTIVITY</b> optional; Monday-Thursday	<b>1</b>	Monday: Yoga Tuesday: Readers' Rendezvous Wednesday: Glee Club Thursday: Movie Club
<b>TOTAL</b>	<b>9</b>	

### ■ Course Duration:

1 – 24 weeks

### ■ Admission Qualification:

18+ years old

If student's English level is very low or zero, we recommend taking the [Zero to One] course first.

### ■ Admission Date:

Every Sunday (Please inquire in advance for Saturday Admission).

Yuki | *Japanese*

When I came here, I couldn't speak English well and I became shy when I spoke English but now, I don't get shy and can speak English. Philinter's class gave me the opportunity to talk and converse so I could improve my English level.



# INTENSIVE ESL

## Overview:

Designed for students seeking accelerated English language mastery, this program focuses strongly on spoken production and personalized, challenging lessons.

## Features:

### ■ Comprehensive English Immersion

The 11-hour daily program includes one-on-one and group sessions for rapid English improvement, strict adherence to the SPARTAN SYSTEM, and a 2-hour evening study from Monday to Thursday for reinforcing daily lessons and additional practice.

### ■ Non-Traditional Learning Approach

Short-term courses (less than 4 weeks) focus on speaking, pronunciation, and vocabulary, while long-term courses (6 weeks or more) also include additional emphasis on writing and grammar.



## Curriculum:

CLASS TYPE	NUMBER OF CLASSES	SUBJECTS / CONTENTS
<b>1 ON 1</b>	<b>4</b>	Speaking, Listening, Reading and Vocabulary, Word Smart, Grammar, Writing, Pronunciation Clinic
<b>SGC</b>	<b>1</b>	Start Talking, Let's Talk, Listening Power, Advance Listening and Dictation, Daily News, Basic Accent Training, Accent and Intonation, Grammar 101, Grammar 301, Grammar 501, Dialogue Patterns, Expression for Conversation, Speak Like a Pro, TED Talk, Debate Excellence, Compelling Conversations, Job Interview, Phrasal Verb, Mastering Idioms
<b>SGC CONNECTING</b> (45-minute connecting)	<b>2</b>	
<b>BGC</b> (Optional)	<b>1</b>	Advanced Listening and Dictation Basic Listening and Dictation Supplemental Grammar Supplemental Vocabulary Advanced Vocabulary News and Trends Premium English
<b>EVENING STUDY</b> (Optional)	<b>2</b>	Guided Self-Study Review: 2 hours from 7 pm – 9 pm
<b>EVENING ACTIVITY</b> optional; Monday-Thursday	<b>1</b>	Monday: Yoga Tuesday: Readers' Rendezvous Wednesday: Glee Club Thursday: Movie Club
<b>TOTAL</b>	<b>11</b>	

### ■ Course Duration:

1 – 24 weeks

### ■ Admission Qualification:

18+ years old  
If student's English level is very low or zero, we recommend taking the [Zero to One] course first.

### ■ Admission Date:

Every Sunday (Please inquire in advance for Saturday Admission).



## Tora | Japanese

I think I enjoyed the whole experience. The teachers were great and I felt that the environment was conducive to improving my English. I was able to experience several group classes, especially in my case, and each 1 on 1 was effective in developing my skills.



# INTENSIVE POWER SPEAKING (IPS)

## Overview:

This highly specific 1–24-week course improves speaking proficiency by balancing fluency and accuracy. Intensive lessons cover diverse communication scenarios, helping students master language skills for various situations.

## Features:

### ■ Comprehensive Speaking Skills Development

The curriculum rapidly improves speaking skills with a focus on general topics and specialized areas like presentations, slang, idioms, current issues, and 'Voice of America.'

### ■ Personalized Feedback from Expert Teachers

With experienced teachers providing tailored feedback, IPS ensures each student receives individualized support to rapidly improve their speaking skills within a short period.



## Curriculum:

CLASS TYPE	NUMBER OF CLASSES	SUBJECTS / CONTENTS
<b>1 ON 1</b>	<b>4</b>	Speaking, Listening, Reading and Vocabulary, Word Smart, Grammar, Writing, Pronunciation Clinic
<b>SGC</b>	<b>2</b>	Start Talking, Let's Talk, Listening Power, Advance Listening and Dictation, Daily News, Basic Accent Training, Accent and Intonation, Grammar 101, Grammar 301, Grammar 501, Dialogue Patterns, Expression for Conversation, Speak Like a Pro, TED Talk, Debate Excellence, Compelling Conversations, Job Interview, Phrasal Verb, Mastering Idioms
<b>SGC CONNECTING</b> (45-minute connecting)	<b>2</b>	
<b>EVENING STUDY</b> (Optional)	<b>2</b>	Guided Self-Study Review: 2 hours from 7 pm – 9 pm
<b>EVENING ACTIVITY</b> optional; Monday-Thursday	<b>1</b>	Monday: Yoga Tuesday: Readers' Rendezvous Wednesday: Glee Club Thursday: Movie Club
<b>TOTAL</b>	<b>11</b>	

### ■ Course Duration:

1 – 12 weeks

### ■ Admission Qualification:

AGE	PHILINTER LEVEL	IELTS	TOEIC
18+	Elementary (201)	2.0 above	250 above

### ■ Admission Date:

Every Sunday (Please inquire in advance for Saturday Admission).

**Hikaru | Japanese**



I'm really satisfied with the change of my English skills. My level of speaking in my first placement test was 201+. But thanks to the dedication and guidance of my teachers, I got 401+ in the last progress test! I'm confident to move onto the next challenge.

# LIGHT ESL

## Overview:

Tailored for individuals seeking a balance between academic commitments and personal responsibilities, this program is ideal for businessmen, seniors, and parents. The course structure allows sufficient personal time for business or relaxation while studying in Cebu.

## Features:

### ■ Flexible Schedule

The program offers 6 hours of classes per day, providing ample personal time for business or leisure activities, making it suitable for those with busy or varied schedules.

### ■ Customized, Conversation-Centered Curriculum

Short-term courses (less than 4 weeks) emphasize speaking, pronunciation, and vocabulary, while longer courses (over 6 weeks) also include writing and grammar – tailored to individual needs and goals.



## Curriculum:

CLASS TYPE	NUMBER OF CLASSES	SUBJECTS / CONTENTS
<b>1 ON 1</b>	<b>2</b>	Speaking, Listening, Reading and Vocabulary, Word Smart, Grammar, Writing, Pronunciation Clinic
<b>SGC</b>	<b>2</b>	Start Talking, Let's Talk, Listening Power, Advance Listening and Dictation, Daily News, Basic Accent Training, Accent and Intonation, Grammar 101, Grammar 301, Grammar 501, Dialogue Patterns, Expression for Conversation, Speak Like a Pro, TED Talk, Debate Excellence, Compelling Conversations, Job Interview, Phrasal Verb, Mastering Idioms
<b>BGC</b> (Optional)	<b>1</b>	Advanced listening and Dictation, Basic Listening and Dictation, Supplemental Grammar, Supplemental Vocabulary, Advanced Vocabulary, News and Trends, Premium English
<b>EVENING ACTIVITY</b> optional; Monday-Thursday	<b>1</b>	Monday: Yoga Tuesday: Readers' Rendezvous Wednesday: Glee Club Thursday: Movie Club
<b>TOTAL</b>	<b>6</b>	

### ■ Course Duration:

1 – 24 weeks

### ■ Admission Qualification:

18+ years old

### ■ Admission Date:

Every Sunday (Please inquire in advance for Saturday Admission).



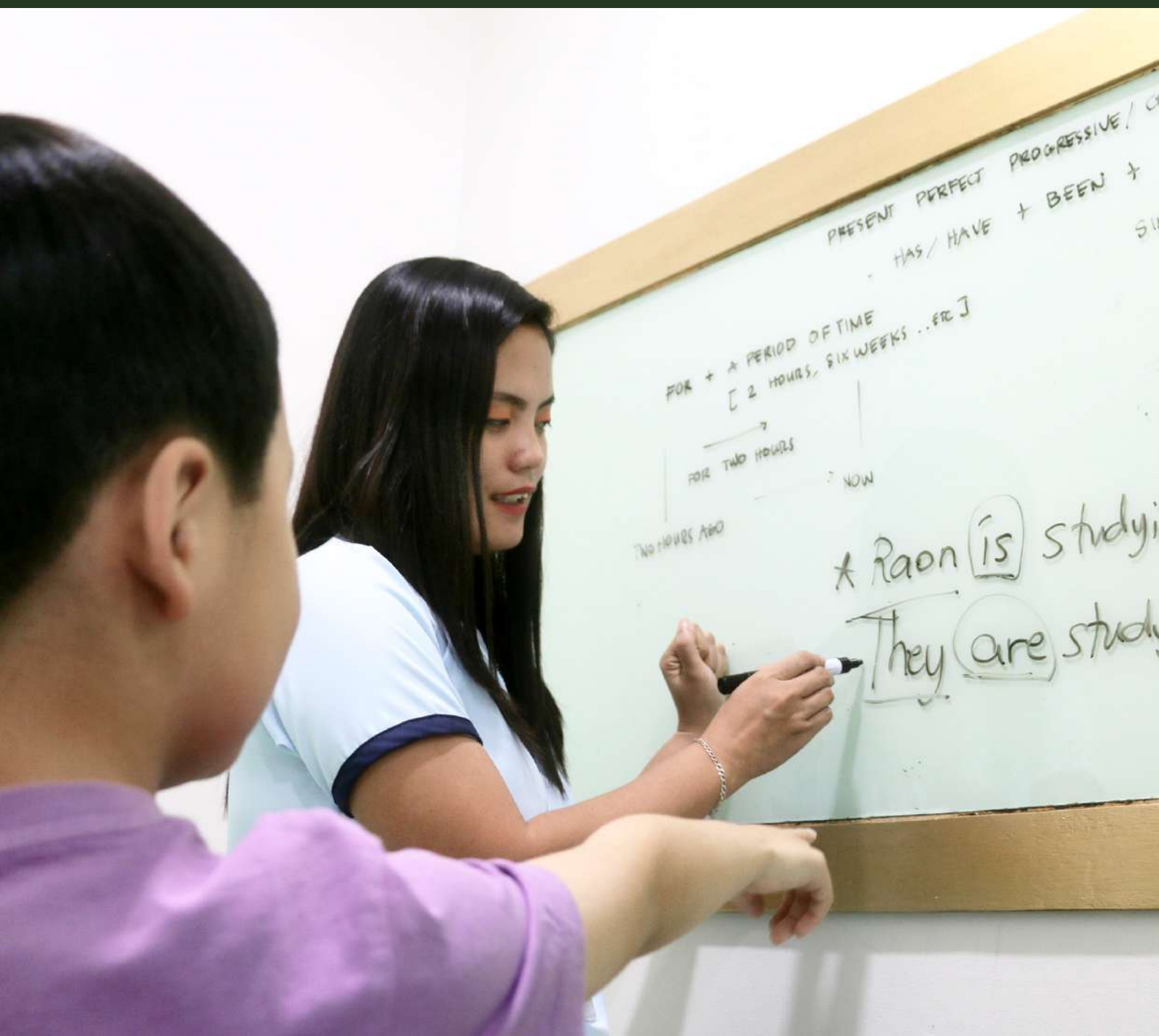
**Guz | Thai**

I learn a lot here and I am enjoying and relaxing. I think my challenge is sometimes a lot of homework.



# JUNIOR AND PRIMARY COURSES

• JUNIOR ESL • JUNIOR IELTS • PRIMARY ENGLISH





# JUNIOR ESL

## Overview:

This program focuses on developing basic English communication skills for young learners. It combines competent teachers, age-appropriate educational materials, and an international environment to provide a comprehensive language learning experience.

## Features:

### ■ Speaking-Centered Curriculum

Our curriculum prioritizes speaking and includes activities focused on conversation, pronunciation, discussion, public speaking, and vocabulary, ensuring that students develop strong communication skills in English.

### ■ Comprehensive Learning Approach

In addition to regular classes, students engage in special sessions, vocabulary memorization, and maintaining an English diary, promoting a well-rounded and immersive learning experience.



## Curriculum:

CLASS TYPE	NUMBER OF CLASSES	SUBJECTS / CONTENTS
1 ON 1	3	Speak Smart, Fun with Words, Reading Adventures, Speech and Pronunciation, Expressive Writing
SGC	2	Junior TV, Junior Talk, Listen & Learn, Engage & Explore
SGC CONNECTING (45-minute connecting)	2	Spelling Bee, Poster-Making, Vocabulary Bingo, Storytelling Sessions, Role-Plays, Interactive Read-Aloud, Creative Writing, Talk Show, Chorale Reading, Physical Education, Play & Learn Lab
<b>TOTAL</b>	<b>7</b>	

### ■ Course Duration:

1 – 12 weeks

### ■ Admission Qualification:

12 – 17 years old

Students in this Junior ESL course must register with a guardian (parent).

### ■ Admission Date:

Every Sunday (Please inquire in advance for Saturday Admission).



Luca | *Korean*

If I have a question, teachers can tell me very well and understand easy. Teachers are kindhearted.



# JUNIOR IELTS

## Overview:

Though IELTS testing starts at 15, this course offers early exam preparation. It's perfect for juniors planning to take English tests or those aiming to improve their practical English skills, providing a head start in advanced proficiency.

## Features:

### ■ Comprehensive IELTS Preparation

Designed for juniors new to IELTS, this course aims to achieve a maximum score of 6.5 by focusing on all four test sections: Writing, Reading, Speaking, and Listening.

### ■ Focused Skill Development and Support

Each class includes test familiarization and strategies, supplemented by evening IELTS MISSION sessions for additional review and practice, while progress is continually monitored through weekly IELTS MOCK TESTS and daily activities.



## Curriculum:

CLASS TYPE	NUMBER OF CLASSES	SUBJECTS / CONTENTS
1 ON 1	4	IELTS Speaking, IELTS Reading, IELTS Writing 1, IELTS Writing 2
SGC	4	IELTS Vocabulary, IELTS Grammar, IELTS Listening, IELTS Pronunciation
EVENING STUDY	2	IELTS Mission 2 hours from 7 pm to 9 pm.
<b>TOTAL</b>	<b>10</b>	

### ■ Course Duration:

1 – 12 weeks

### ■ Admission Date:

Every Sunday (Please inquire in advance for Saturday Admission).

### ■ Admission Qualification:

AGE	PHILINTER LEVEL	IELTS	TOEIC
12-17	Upper Elementary (201+)	3.0 above	400 above

Students must be accompanied by a guardian/parent.



**Khoi** | Vietnamese

My scores improved. The classes and learning are good.  
The teachers are great and friendly.

# PRIMARY ENGLISH

## Overview:

Integrates play with learning for children aged 11 and under. Delivered by experienced educators specialized in early childhood English education, it fosters an engaging and effective learning environment for young students.

## Features:

### ■ Engaging, Play-Based Learning

The course utilizes a speaking-centered curriculum, incorporating conversation, pronunciation, phonics, role-playing, and vocabulary activities to ensure that young learners enjoy their English lessons while making meaningful progress.

### ■ Daily Vocabulary and Diary Practice

Children are encouraged to keep an English diary and memorize 10 to 20 new vocabulary words daily, tailored to their proficiency level, to reinforce their learning and build a strong foundation in English.



## Curriculum:

CLASS TYPE	NUMBER OF CLASSES	SUBJECTS / CONTENTS
1 ON 1	3	Speak Smart, Fun with Words, Reading Adventures, Speech and Pronunciation, Expressive Writing
SGC	2	Kids TV, Kids Talk, Listen & Learn, Engage & Explore ESL
SGC CONNECTING (45-minute connecting)	2	Spelling Bee Poster Making Vocabulary Bingo Storytelling Sessions Role-Plays Interactive Read-Aloud Creative Writing Talk Show Chorale Reading Physical Education Play & Learn Lab
<b>TOTAL</b>	<b>7</b>	

### ■ Course Duration:

1 – 12 weeks

### ■ Admission Qualification:

7 – 11 years old  
Students must be accompanied by a guardian/parent.

### ■ Admission Date:

Every Sunday (Please inquire in advance for Saturday Admission).



## Chae Been | *Korean*

My classes fit nicely for me. The teachers are super-ultra-great. The learnings fit really well for me. At first, English is hard but the teachers helped me which makes it easier for me. Overall, it was fun!



# IELTS COURSES

• IELTS INTENSIVE

• IELTS GUARANTEE



# IELTS INTENSIVE

## Overview:

This comprehensive course balances **practical test-taking strategies** with **essential English language skills** development, preparing students for the IELTS exam while enhancing real-world communication.

## Features:

### ■ Significant Score Improvement

The course is designed to improve IELTS band scores by 0.5 to 1.0 per 4 weeks, with an expected overall increase of 0 to 2.0 in 8 weeks.

### ■ Test-Taking Skills and Strategies

Students receive training in proven test-taking strategies used by high-band achievers, ensuring they are well-prepared for all aspects of the IELTS exam.

### ■ British Council IELTS Certified Test Center

The course is offered at a certified test center, allowing students to take the official IELTS test conveniently on campus.

## Curriculum:

CLASS TYPE	NUMBER OF CLASSES	SUBJECTS / CONTENTS
1 ON 1	4	IELTS Speaking, IELTS Reading, IELTS Writing 1, IELTS Writing 2
SGC	4	IELTS Common Mistakes, IELTS Vocabulary, IELTS Grammar, IELTS Weekly Test Review, IELTS pronunciation, IELTS Listening
EVENING STUDY	2	IELTS Mission: 2 hours from 7 pm – 9 pm
<b>TOTAL</b>	<b>10</b>	

### ■ Course Duration:

1 – 16 weeks

### ■ Admission Date:

Every Sunday (Please inquire in advance for Saturday Admission).

### ■ Admission Qualification:

AGE	PHILINTER LEVEL	IELTS	TOEIC
18+	Upper Elementary (201+)	3.0 above	400 above

Must pass the ONLINE INTERVIEW before and after registering for this course.



## Penny | Taiwanese

The teachers are patient and set courses and goals for each student. I really learned a lot in IELTS courses for four weeks. I think this is my unforgettable memory. If I have a chance and time, I will come to Philinter again to improve my English ability.



# IELTS GUARANTEE

## 8 or 12 Weeks

### Overview:

Offered at Philinter's British Council-certified test center, this program features top-tier IELTS instructors. Students have the unique opportunity to learn from rare 8.0 band score IELTS teachers, ensuring exceptional exam preparation.

### Features:

#### ■ Achieve IELTS Score Improvement from 5.5 to 6.5 in 8 Weeks

This program is specifically designed to boost students' IELTS scores quickly. By teaching effective test-taking strategies and skills used by high-band achievers, it equips students with the techniques necessary to excel in the IELTS exam.

#### ■ British Council IELTS Certified Test Center

The program is conducted at an official British Council IELTS-certified test center, offering the convenience of taking the official test on campus.

#### ■ Full Exam Cost Coverage

The school covers the full cost of the IELTS exam for one attempt, as detailed in the IELTS Guarantee Regulations and Benefits.

### Curriculum:

CLASS TYPE	NUMBER OF CLASSES	SUBJECTS / CONTENTS
1 ON 1	4	IELTS Speaking, IELTS Reading, IELTS Writing 1, IELTS Writing 2
SGC	4	IELTS Common Mistakes, IELTS Vocabulary, IELTS Grammar, IELTS Weekly Test Review, IELTS pronunciation, IELTS Listening
EVENING STUDY	2	IELTS Mission: 2 hours from 7 pm – 9 pm
<b>TOTAL</b>	<b>10</b>	

#### ■ Course Duration:

8 or 12 weeks

#### ■ Admission Date:

Only designated date admission is possible. Inquiries are required before registration.

#### ■ Admission Qualification:

SCORE GUARANTEE	QUALIFICATION	AGE
IELTS 7.0	IELTS 6.5	18+
IELTS 6.5	IELTS 5.5	18+
IELTS 5.5	IELTS 3.5	18+

Must pass the ONLINE INTERVIEW before and after registering for this course.

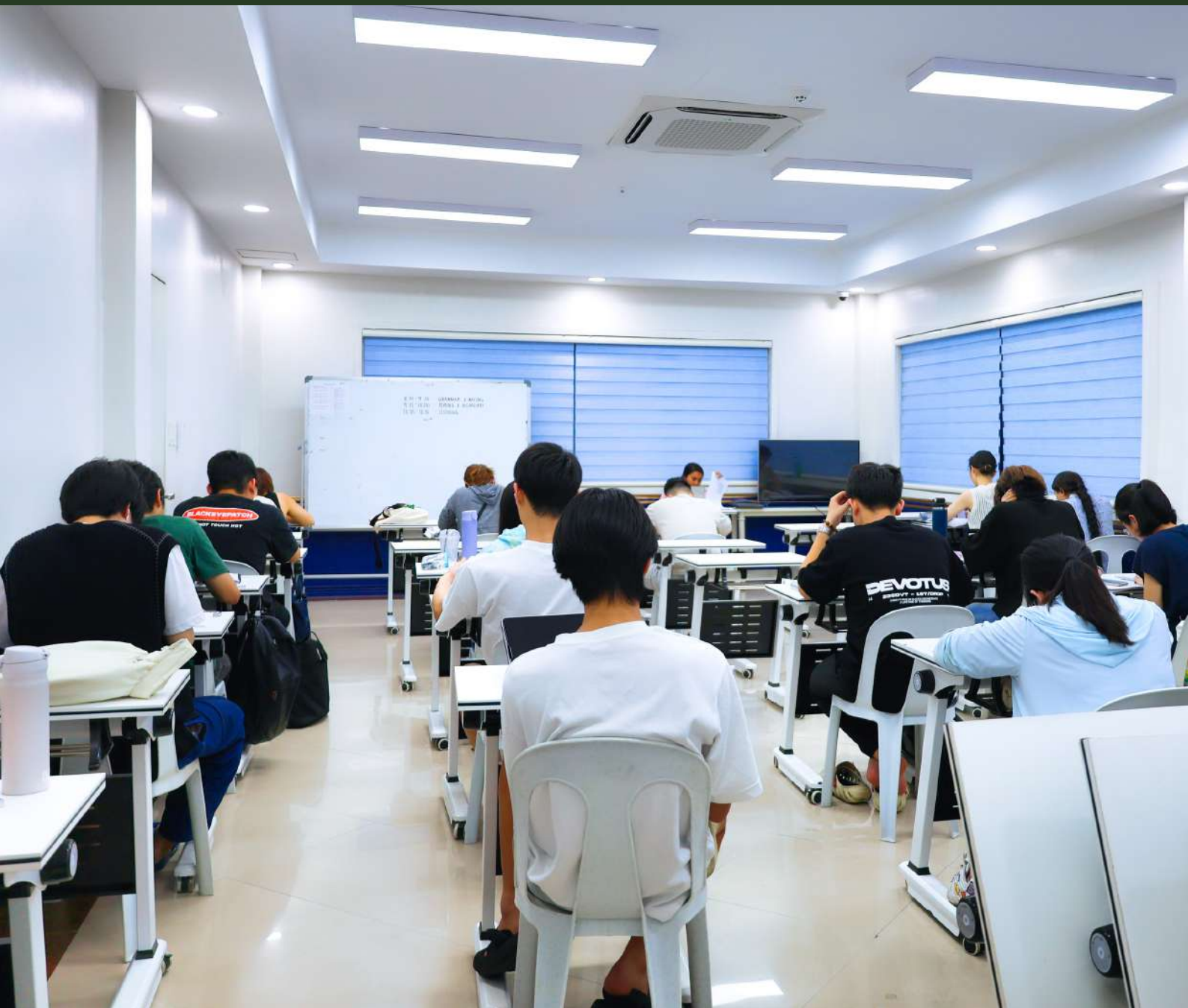
**Henry Dat** | Vietnamese

Every class here is very interesting, making me interested in learning. I encountered many difficulties, but thanks to the teacher's encouragement and practice, I improved a lot.



# BUSINESS AND TOEIC COURSES

- FOCUS INDUTRY
- BASIC BUSINESS
- ADVANCED BUSINESS
- TOEIC REGULAR



# FOCUS INDUSTRY

## Features:

### ■ Industry-Specific Business English

The program provides 3 hours of specialized one-on-one business English instruction for specific fields (e.g., Medical, Engineering, IT), ensuring relevant language skills for each industry.

### ■ Customizable Content for Job Search Activities

For those preparing for employment, the program allows for adjustments or additions to class content related to job search activities, such as resume writing and interview preparation.

## Overview:

Offers tailored English for various business needs. Students practice and acquire relevant English for their job, major, or specific area while engaging with a comprehensive business curriculum.

## Curriculum:

CLASS TYPE	NUMBER OF CLASSES	SUBJECTS / CONTENTS
<b>1 ON 1</b>	<b>3</b>	Business Listening, Business Speaking, Meetings and Negotiations, Hosting a Meeting, Telephoning/Telecommunication, Job Interview, Resume Writing, Emailing, Cover Letter, Business Writing Correspondence  <b>Elective Class:</b> Hotels and Catering, Flight Attendant, Sales and Marketing, Physiotherapy, Medical, Nursing, Finance Tourism, Civil Aviation, Food Industries, Culinary Arts, Engineering, Art and Design, Architecture, TESOL/Kindergarten Teacher
<b>SGC</b>	<b>2</b>	Business Talk, Job Interview, Debate Excellence, TED Talk, Accent and Intonation, Compelling Conversation, Daily News, Speak Like a Pro
<b>SGC CONNECTING</b> (45-minute connecting)	<b>2</b>	
<b>BGC</b> (Optional)	<b>1</b>	Business Idioms, Listening and Dictation, Supplemental Grammar, Supplemental Vocabulary, Power Multimedia, News and Trends, Premium English
<b>EVENING ACTIVITY</b> optional; Monday-Thursday	<b>1</b>	Monday: Yoga Tuesday: Readers' Rendezvous Wednesday: Glee Club Thursday: Movie Club
<b>TOTAL</b>	<b>9</b>	

### ■ Course Duration:

1 – 12 weeks

### ■ Admission Date:

Every Sunday  
(Please inquire in advance for Saturday Admission).

### ■ Admission Qualification:

AGE	PHILINTER LEVEL	IELTS	TOEIC
18+	Upper Elementary (201+)	3.5 above	400 above

Must pass the ONLINE INTERVIEW before and after registering for this course.



Young | Chinese

I am very grateful to the teachers of each class. They all put a lot of effort into teaching me more useful and practical English skills. With their help, I have learned a lot and gradually formed a learning habit, and my English is gradually improving.



# BASIC BUSINESS

## Features:

### ■ Foundation for Advanced Business English

The course provides a strong foundation for learners who plan to pursue advanced business studies, making it ideal for business beginners with basic English proficiency.

### ■ Business & ESL Integration

With 70-80% of the curriculum focused on business and the rest on ESL, this course ensures that students strengthen their business knowledge while improving essential English skills.

### ■ Flexible Business & TOEIC Focus

The program allows flexibility by offering one-on-one and small group classes that can be tailored to business or TOEIC topics, giving students up to 3 hours of targeted preparation.

## Overview:

Ideal for business newcomers with lower English proficiency, this course establishes a strong foundation in academic and business skills.

## Curriculum:

CLASS TYPE	NUMBER OF CLASSES	SUBJECTS / CONTENTS
<b>1 ON 1</b>	<b>3</b>	Business Speaking, Business Writing Correspondence, Business Listening, Business Vocabulary
<b>SGC</b>	<b>2</b>	Basic Business Talk, Job Interview, Daily News, Basic Accent Training, Compelling Conversations, Speak Like a Pro, Start Talking, Let's Talk, Listening Power, Advanced Listening, Expression for Conversation, Dialogue Patterns
<b>SGC CONNECTING</b> (45-minute connecting)	<b>2</b>	
<b>BGC</b> (Optional)	<b>1</b>	Business Idioms, Listening and Dictation, Supplemental Grammar, Supplemental Vocabulary, News and Trends, Premium English
<b>EVENING ACTIVITY</b> optional; Monday-Thursday	<b>1</b>	Monday: Yoga Tuesday: Readers' Rendezvous Wednesday: Glee Club Thursday: Movie Club
<b>TOTAL</b>	<b>9</b>	

### ■ Course Duration:

1 – 12 weeks

### ■ Admission Date:

Every Sunday (Please inquire in advance for Saturday Admission).

### ■ Admission Qualification:

AGE	PHILINTER LEVEL	IELTS	TOEIC
18+	Upper Elementary (201+)	3.0 above	400 above

Must pass the ONLINE INTERVIEW before and after registering for this course.



**Mei | Taiwanese**

The teachers are smart, funny and have good teaching skill. I learned many businesses English communication from my business course.



# ADVANCED BUSINESS

## Features:

### ■ Tailored Advanced Business Curriculum

The course offers a customized business English curriculum covering conversations, transactions, meetings, negotiations, and document work. It can be adjusted for unemployed individuals to include job search activities aligned with their career goals.

### ■ High-Intensity Presentation Classes

Daily 2-hour presentation sessions challenge students to develop and deliver presentations, equipping them with memorable expressions and enhanced confidence for professional communication.

## Overview:

Tailored for intermediate to advanced-level students, this rigorous course enhances business-specific English skills. Among Cebu ESL schools, this course offers the highest level of difficulty in Advanced Business English.

## Curriculum:

CLASS TYPE	NUMBER OF CLASSES	SUBJECTS / CONTENTS
<b>1 ON 1</b>	<b>3</b>	Business Presentation (2 hours), Business Writing Correspondence, Business Speaking Business Listening, Business Reading
<b>SGC</b>	<b>2</b>	Advanced Business Talk, Job Interview, TED Talk, Accent and Intonation, Compelling Conversations, Debate Excellence, Daily News, Speak Like a Pro, Advanced Listening, Expression for Conversation, Dialogue Patterns
<b>SGC CONNECTING</b> (45-minute connecting)	<b>2</b>	
<b>BGC</b> (Optional)	<b>1</b>	Business Idioms, Advanced Listening and Dictation, Supplemental Grammar, Advanced Vocabulary, News and Trends, Premium English
<b>EVENING ACTIVITY</b> optional; Monday-Thursday	<b>1</b>	Monday: Yoga Tuesday: Readers' Rendezvous Wednesday: Glee Club Thursday: Movie Club
<b>TOTAL</b>	<b>9</b>	

### ■ Course Duration:

1 – 12 weeks

### ■ Admission Date:

Every Sunday  
(Please inquire in advance for Saturday Admission).

### ■ Admission Qualification:

AGE	PHILINTER LEVEL	IELTS	TOEIC
18+	Intermediate (301+)	4.5 above	670 above

Must pass the ONLINE INTERVIEW before and after registering for this course.



Leon | Taiwanese

During advance business class, I tried my best to follow teacher's tempo. That improve my skill a lot. Also, teachers helped me modify my presentation's script, pronunciation, etc. These lead me to have a successful presentation.

# TOEIC REGULAR

## Features:

### ■ Expert-Led TOEIC Preparation with Rapid Score Improvement

Taught by professional TOEIC instructors, the course focuses on boosting scores with an average improvement of 100-150 points in just 4 weeks, using proven strategies and the latest exam materials.

### ■ Flexible TOEIC-Business Integration

Students have the option to seamlessly switch between TOEIC preparation and business communication topics, making the course ideal for those looking to enhance both test performance and practical business skills.

## Overview:

Open to everyone, from beginners to those aiming for 920+ scores, this course develops effective TOEIC test-taking strategies, up-to-date materials, and personalized feedback.

## Curriculum:

CLASS TYPE	NUMBER OF CLASSES	SUBJECTS / CONTENTS
<b>1 ON 1</b>	<b>3</b>	TOEIC Listening 1, TOEIC Listening 2, TOEIC Reading 1, TOEIC Reading 2, TOEIC Speaking, TOEIC Writing
<b>SGC</b>	<b>3</b>	TOEIC Integrated 1 (Listening/Test Review), TOEIC Integrated 2 (Reading/Test Review)
<b>BGC</b> (Optional)	<b>2</b>	Advanced Listening and Dictation, Supplemental Grammar, Advanced Vocabulary, Business Idioms, News and Trends, Premium English
<b>EVENING ACTIVITY</b> optional; Monday-Thursday	<b>1</b>	Monday: Yoga Tuesday: Readers' Rendezvous Wednesday: Glee Club Thursday: Movie Club
<b>TOTAL</b>	<b>9</b>	

### ■ Course Duration:

1 – 16 weeks

### ■ Admission Date:

Every Sunday  
(Please inquire in advance for Saturday Admission).

### ■ Admission Qualification:

AGE	PHILINTER LEVEL	IELTS	TOEIC
18+	Elementary (201)	2.0 above	250 above



**Miharu | Japanese**

I learned the basics of English and TOEIC preparation at Philinter. The teachers were very kind. I am glad that I came to study abroad as a start of my English learning.



# SPECIAL COURSES

• IELTS 16-WEEK FOR 5.5

• IELTS 16-WEEK FOR 6.5



# IELTS 16-WEEK FOR 5.5

## Features:

### Comprehensive Skill Foundation

This program includes 8 weeks of intensive training in grammar, vocabulary, listening, and writing to establish a solid language foundation before IELTS preparation, equipping students to achieve IELTS 5.5 or above by the end of the course.

### Expert Instruction

Receive guidance from experienced teachers with band scores of 8.0 and 7.5, equipping students with effective exam strategies.

### On-Campus Official Testing

Students can take the official IELTS test on campus at our British Council-certified test center, ensuring a smooth transition from preparation to assessment.

## Overview:

Tailored for upper-beginners, this program is the fastest route to achieving an IELTS score of 5.5 or higher. It's perfect for students with lower English proficiency but high ambition, offering a solid foundation for future IELTS success.

## Curriculum:

CLASS TYPE	NUMBER OF CLASSES	SUBJECTS / CONTENTS
1 ON 1	4	<p><b>Intensive ESL (First 6 – 8 weeks):</b> Speaking, Listening, Reading and Vocabulary, Word Smart, Grammar, Writing, Pronunciation Clinic</p> <p><b>IELTS Intensive (Next 8 – 10 weeks):</b> IELTS Speaking, IELTS Reading, IELTS Writing 1, IELTS Writing 2</p>
SGC	4	<p><b>Intensive ESL (First 6 – 8 weeks):</b> Start Talking, Let's Talk, Listening Power, Advance Listening and Dictation, Daily News, Basic Accent Training, Accent and Intonation, Grammar 101, Grammar 301, Grammar 501, Dialogue Patterns, Expression for Conversation, Speak Like a Pro, TED Talk, Debate Excellence, Compelling Conversations, Job Interview, Phrasal Verb, Mastering Idioms</p> <p><b>IELTS Intensive (Next 8 – 10 weeks):</b> IELTS Common Mistakes, IELTS Vocabulary, IELTS Grammar, IELTS Weekly Test Review, IELTS Pronunciation, IELTS Listening</p>
EVENING STUDY	2	<p><b>Intensive ESL (First 6 – 8 weeks):</b> Review (2 hours from 7 pm to 9 pm)</p> <p><b>IELTS Intensive (Next 8 – 10 weeks):</b> IELTS Mission (2 hours from 7 pm to 9 pm)</p>
<b>TOTAL</b>	<b>10</b>	

### Course Duration:

1-16 weeks

### Admission Date:

Every Sunday (Please inquire in advance for Saturday Admission).

### Admission Qualification:

AGE	PHILINTER LEVEL	IELTS
18+	Upper Beginner (101+)	1.5 above

To join this course, students must pass the ADMISSION INTERVIEW, which evaluates your basic skills in speaking, grammar, and vocabulary.



**Sammi** | *Taiwanese*

I really enjoy this course where I can learn lots of skills, meet numerous classmates, and create wonderful companionship with my teachers.



# IELTS 16-WEEK FOR 6.5

## Features:

### Structured Progression to High Scores

This course starts with 4 weeks of intensive ESL training, followed by 12 weeks of focused IELTS preparation, helping students progress from a score of 6.0 to 6.5 through systematic practice.

### Expert Instruction

Receive guidance from experienced teachers with band scores of 8.0 and 7.5, equipping students with effective exam strategies.

### On-Campus Official Testing

Students can take the official IELTS test on campus at our British Council-certified test center, ensuring a smooth transition from preparation to assessment.

## Overview:

This comprehensive program is designed for students aiming to achieve an IELTS score of 6.5 or higher. It guarantees clear and successful results, making it ideal for those requiring a high IELTS score within a structured study period.

## Curriculum:

CLASS TYPE	NUMBER OF CLASSES	SUBJECTS / CONTENTS
1 ON 1	4	<b>Intensive ESL (First 4 weeks):</b> Speaking, Listening, Reading and Vocabulary, Word Smart, Grammar, Writing, Pronunciation Clinic  <b>IELTS Intensive (Remaining 12 weeks):</b> IELTS Speaking, IELTS Reading, IELTS Writing 1, IELTS Writing 2
SGC	4	<b>Intensive ESL (First 4 weeks):</b> Start Talking, Let's Talk, Listening Power, Advance Listening and Dictation, Daily News, Basic Accent Training, Accent and Intonation, Grammar 101, Grammar 301, Grammar 501, Dialogue Patterns, Expression for Conversation, Speak Like a Pro, TED Talk, Debate Excellence, Compelling Conversations, Job Interview, Phrasal Verb, Mastering Idioms  <b>IELTS Intensive (Remaining 12 weeks):</b> IELTS Common Mistakes, IELTS Vocabulary, IELTS Grammar, IELTS Weekly Test Review, IELTS Pronunciation, IELTS Listening
EVENING STUDY	2	<b>Intensive ESL (First 4 weeks):</b> Review (2 hours from 7 pm to 9 pm)  <b>IELTS Intensive (Remaining 12 weeks):</b> IELTS Mission (2 hours from 7 pm to 9 pm)
<b>TOTAL</b>	<b>10</b>	

### Course Duration:

1-16 weeks

### Admission Date:

Every Sunday (Please inquire in advance for Saturday Admission).

### Admission Qualification:

AGE	PHILINTER LEVEL	IELTS
18+	Pre-Intermediate (301)	3.5 above

Students must pass the ADMISSION INTERVIEW regardless of whether they have an official score or not.

Jing | Taiwanese

Studying IELTS is adventurous trip for me. However, I am so glad to learn a lot from patient and kind teachers. Also, thanks to teachers for encouraging me talk in class and improving my speaking including pronunciation fluency and grammar.



# WHAT'S NEW?

At Philinter, we're constantly innovating to provide our students with the most effective and engaging learning experiences. We're thrilled to introduce our latest program: **PREMIUM SGC** (Small Group Class) – a fresh addition designed to take your English learning journey to the next level!

## PREMIUM SPEAKING

## PREMIUM JUNIOR SPEAKING

## WHAT ARE ITS EDGES?



### IELTS 8.0 Teachers

Learn from highly qualified instructors with IELTS scores of 8.0 or higher, backed by years of extensive experience in the field.



### Collaborative Learning

Participate in group classes that foster collaboration, teamwork, and shared learning experiences.



### Premium Resources

Gain access to carefully curated, high-quality resources and a curriculum designed to address your unique learning needs, with free consultations available anytime for ongoing support.



### Speaking Focus

Achieve your personal speaking goals with customized assessments and detailed progress tracking, designed to ensure continuous improvement and success in your English speaking skills.

# COURSE SUMMARY

COURSE	CLASS ASSIGNMENT									ENTRY LEVEL			
	COURSE DURATION	Age	1:1	SGC (45 Minutes)	SGC (Connecting)	BGC (Optional)	EVENING STUDY	EVENING ACTIVITY (Optional)	TOTAL	PHILINTER LEVEL	IELTS	TOEIC	
Premium SGC													
Premium Speaking	8	18+	-	4	4	-	2	1	11	Upper Elementary	201+	3.0 above	400 above
Premium Junior Speaking	4-6	12-17	-	3	4	-	2	1	10	Upper Elementary	201+	3.0 above	400 above
Premium IELTS	8	18+	-	6	2	-	2	1	11	Course Updates Coming Soon			
Premium TOEIC	8	18+	-	6	2	-	2	1	11				
Intensive ESL	1-24	18+	4	1	2	1	2	1	11	-	-	-	-
General ESL	1-24	18+	3	1	2	2	-	1	9	-	-	-	-
Light ESL	1-24	18+	2	2	-	1	-	1	6	-	-	-	-
Intensive Power Speaking (IPS)	1-12	18+	4	2	2	-	2	1	11	Elementary	201	2.0 above	250 above
IELTS Intensive	1-16	18+	4	4	-	-	2	-	10	Upper Elementary	201+	3.0 above	400 above
IELTS Guarantee													
5.5	8 or 12	18+	4	4	-	-	2	-	10	Official IELTS Score & Online Interview	201+	3.5	-
6.5									10		401	5.5	-
7.0									10		401+	6.5	-
IELTS 16 Weeks For 6.5	1-16	18+	4	4	-	-	2	-	10	Upper Elementary	201+	3.5 above	-
IELTS 16 Weeks For 5.5	1-16	18+	4	4	-	-	2	-	10	Upper Beginner	101+	1.5 above	-
TOEIC Regular	1-16	18+	3	3	-	2	-	1	9	Elementary	201	2.0 above	250 above
Focus Industry	1-12	18+	3	2	2	1	-	1	9	Upper Elementary	201+	3.0 above	400 above
Basic Business	1-12	18+	3	2	2	1	-	1	9	Upper Elementary	201+	3.0 above	400 above
Advanced Business	1-12	18+	3	2	2	1	-	1	9	Intermediate	301+	5.0 above	670 above
Cambridge													
PET													
FCE	4-24	18+	4	2	-	2	-	-	8	Course Updates Coming Soon			
CAE													
TOEFL													
85 UP													
100 UP	4-24	18+	4	2	-	1	-	-	7	Course Updates Coming Soon			
110 UP													
Primary English	1-12	7-11	3	2	2 (Activity)	-	-	-	7	-	-	-	-
Junior ESL	1-12	12-17	3	2	2 (Activity)	-	-	-	7	-	-	-	-
Junior IELTS	1-12	12-17	4	4	-	-	2	-	10	Upper Elementary	201+	3.0 above	400 above



# CEFR

Philinter adapts the globally recognized CEFR (Common European Framework of Reference for Languages) to evaluate language proficiency. This framework enables teachers, learners, educational institutions, and employers to easily assess and compare English abilities for various purposes.

## The CEFR six levels of foreign language mastery

### A1

#### At this level you can understand:

- > Very basic, everyday phrases.
- > Carefully articulated, slow speech with long pauses.
- > Very short, simple text, familiar names and words/

### A2

#### At this level you can understand:

- > Very basic personal, family, and job-related language.
- > Enough to meet the needs with slow, clear speech.
- > Short, simple text on familiar matter.

### B1

#### At this level you can understand:

- > Main points on common topics at work, school or travelling.
- > General and specific details given clear speech.
- > Factual text on subject of interest.

### B2

#### At this level you can understand:

- > Main ideas on complex text.
- > Standard spoken language, live or broadcast.
- > Text with a board reading vocabulary and large degree of autonomy.

### C1

#### At this level you can understand:

- > Long text and their implicit meaning.
- > Lengthy speech on abstract topics with relative ease.
- > Details in complex test, even if not relating to your own specialty.

### C2

#### At this level you can understand:

- > Virtually everything heard or need with ease.
- > All spoken language at a fast native pace.
- > Abstract, structurally complex test and literary writing.

PHILINTER LEVEL		EQUIVALENT SCORE					
		IELTS	TOEIC	TOEFL	DET	CAMBRIDGE	CEFR
601	Proficient	8.5-9.0	955-990	111-120	145-160	Proficiency (CPE)	C2
501+	Upper Advanced	7.5-8.0	930-950	106-110	135-140	Advanced (CAE)	C1
501	Advanced	7.0	905-925	100-105	130	Advanced (CAE)	C1
401+	Pre-Advanced	6.5	865-900	90-99	120-125	First (FCE)	B2
401	Upper Intermediate	5.5-6.0	790-860	82-89	115	First (FCE)	B2
301+	Intermediate	5.0	670-785	70-81	100-110	Preliminary (PET)	B1
301	Pre-Intermediate	4.0-4.5	530-665	56-69	90-95	Key (KET)	B1
201+	Upper Elementary	3.0-3.5	400-525	43-55	80-85		A2
201	Elementary	2.0-2.5	250-395	30-42	70-75		A2
101+	Upper Beginner	1.5	160-240	19-29	60-65		A1
101	Beginner	1.0	0-155	0-18	10-55		Pre-A1

# DAILY SCHEDULE

TIME	ACTIVITY	EVENING STUDY
07:30 – 08:10 am	BREAKFAST	<p><b>Review / Mission Class</b></p> <p><b>Conduct supplementary classes:</b> During the first hour, the teacher may provide short activities such as reading passages or listening exams to provide additional practice and guidance. This creates a controlled environment where students can receive targeted support and practice their skills in a structured way.</p> <p><b>Guided self-study and homework:</b> During the second hour of the program, students work independently on their homework at their own pace. If necessary, students may ask the teacher any questions.</p> <p><b>Encourage academic motivation through Counseling:</b> Academic counseling is provided regularly, and students will receive motivation and suggestions to help them achieve their academic goals.</p>
08:00 – 08:45 am	1st Class	
08:50 – 09:35 am	2nd Class	
09:40 – 10:25 am	3rd Class	
10:30 – 11:15 am	4th Class	
11:20 – 12:00 am	5th Class	
11:50 – 12:30 pm	LUNCH	
13:00 – 13:45 pm	6th Class	
13:50 – 14: 35 pm	7th Class	
14:40 – 15:25 pm	8th Class	
15:30 – 16:15 pm	9th Class	
16:20 – 17:00 pm	10th Class	
17:30 – 18:10 pm	DINNER	
18:10 – 18:50 pm	Evening Activity	
19:00 – 20:00 pm	Evening Study	
20:00 – 21:00 pm	Evening Study	

# PHILINTER

## English Day

Every Last Friday of the Month

Philinter Academy's signature event since 2005, featuring various performances for students and teachers, lasting 2 to 5 hours, depending on the event.



## Outreach Program

Every last Saturday of the Month

Every month, we go to a specific place to help those who are in need. We offer our time, resources, and kindness to make a positive impact in their lives.



## Swimming Lesson

Afternoon or Evening Time

Held during class-free times at the schoolpool; though not run by the school, we guide interested individuals to instructors.



## Yoga

Every Monday | 6:00 - 6:50 PM

School-organized yoga lessons led by a certified coach from Mongolia, promote physical well-being with unique benefits such as reduced joint impact and increased muscle resistance.



# ACTIVITIES



## Movie Club

Every Thursday | 6:30 - 8:00 PM

Enjoy movies in the Amphitheater for entertainment, education, and emotional experiences that bring people together.

## Zumba

Every Tuesday | 5:00 - 5:30 PM

Join our Zumba sessions, a school tradition for years, promoting heart health, calorie burn, muscle tone, and stress reduction through lively music and moves.

## Reader's Rendezvous

Every Tuesday | 6:00 - 6:50 PM

Aiming to encourage enjoyable reading and meaningful book discussions, recognizing the various benefits of engaging the mind through reading.

## Glee Club

Every Wednesday | 6:00 - 6:50 PM

An engaging experience for students who want to learn music, fostering creativity and support for those aspiring to become professionals or play for fun.

# FUN WEEKEND

## ACTIVITIES

During the weekend, students enjoy a variety of activities individually and with classmates.



### Golf Rounding & Driving Range

Mactan Air Base Golf is near the school, conveniently located just 10 minutes away by car. The cost is approximately 4,000 to 5,000 pesos. There is also a golf driving range available.



### Badminton

Smash a good time at Ajikun Badminton Club. It opens every Monday to Sunday from 7:00 A.M. onwards. They offer racket rentals, and shuttlecocks are available for purchase.



### Personal Trip

Rent a car (or a car and driver) for a short trip to your desired destinations in Cebu. Create your unique travel experience in famous travel spots and quiet suburbs.



### City Tour

Visit Cebu City's best tourist spots and learn about its amazing history and culture. It's a fun way to explore and gain knowledge!



### Resort Tour

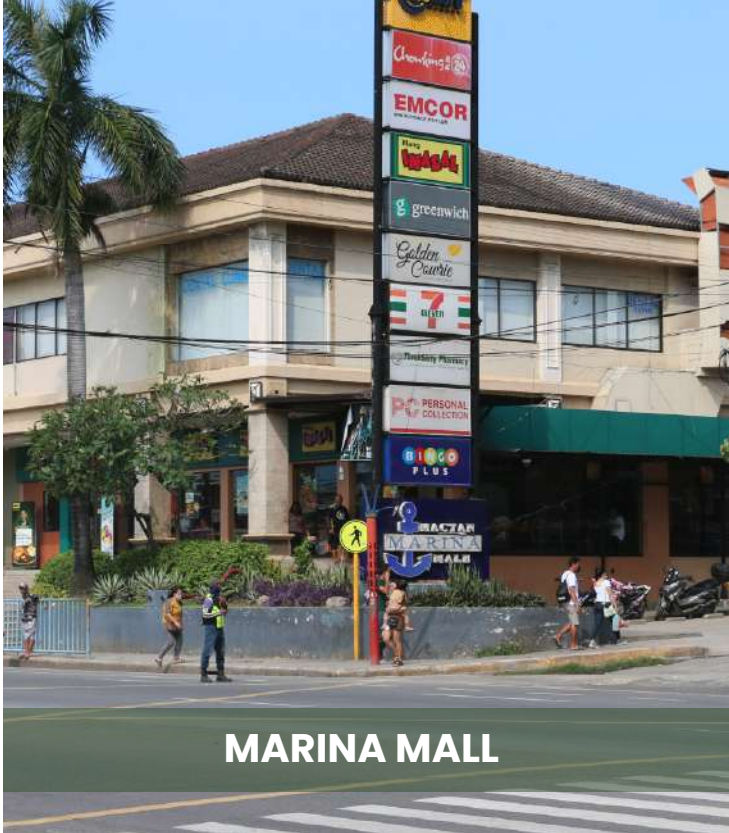
Explore 5-star hotels on Mactan Island with affordable day or 2-day/1-night tours. Top picks include Shangri-La Hotels and Resort, ideal for a short break; Movenpick; Plantation Bay Resort, with family-friendly water park facilities; and J-Park Island Resort.



### Scuba Diving & Ocean Activities

Visit Cebu City's best tourist spots and learn about its amazing history and culture. It's a fun way to explore and gain knowledge!





MARINA MALL



ISLAND CENTRAL MALL

# WHERE TO SHOP?

GAISANO MACTAN MALL



SHAMROCK



PHO19



NONKI JAPANESE RESTAURANT

# WHERE TO DINE?

BUCKET SHRIMP



**LOMI SPA**



**STARBUCKS**



# WHERE TO RELAX?



**J-PARK ISLAND RESORT**

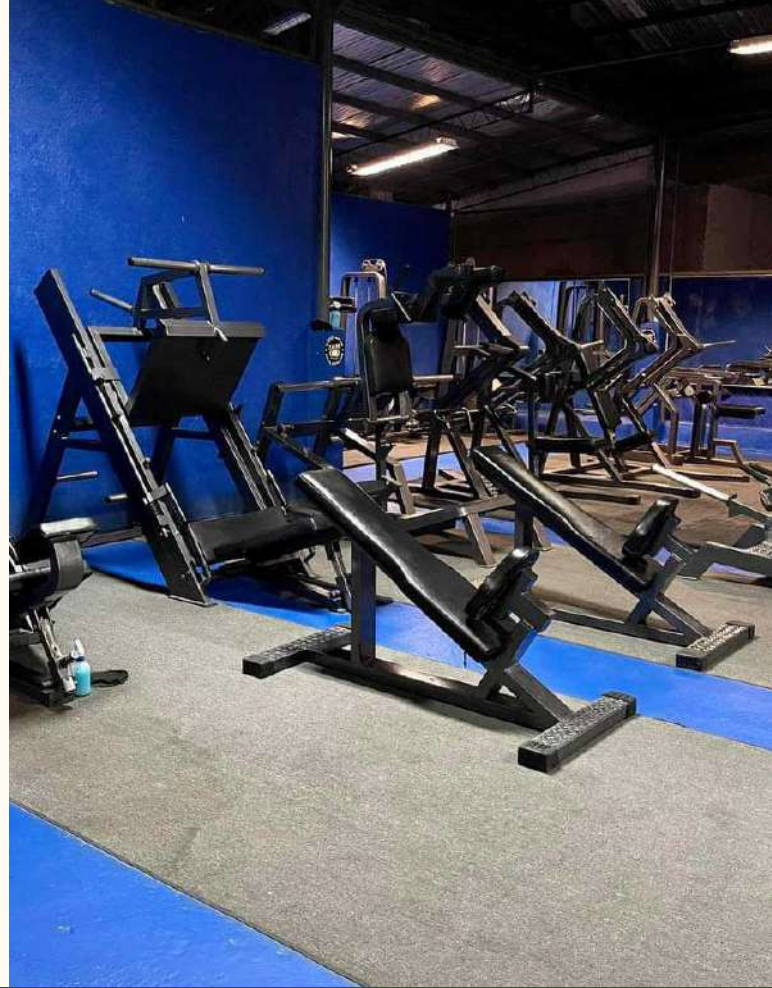


**TOM N TOMS COFFEE**



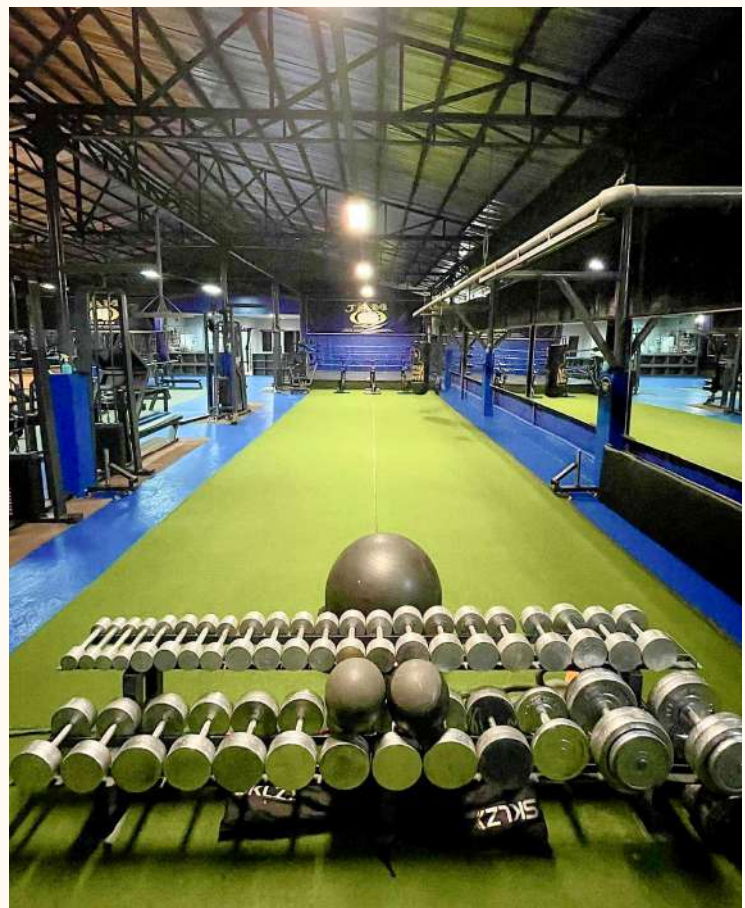
**BLUE WATER**





**WHERE TO STAY FIT?**

# **JAM FITNESS GYM**





# PHILINTER ACADEMY

## Contact Us



Ceniza St., Mustang, Pusok, Lapu-Lapu City,  
Cebu, Philippines 6015



+63 32 340 7453



philinter.info@gmail.com



philinter.com



Philinter Academy